

Michael Reudenbach

Stratton
für Ensemble

2009

Michael Reudenbach

Stratton für Ensemble

2009

Kompositionsauftrag des Westdeutschen Rundfunks

Ensemblebesetzung

Flöte

Klarinette (B)

Fagott

Horn (F)

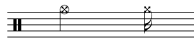
Posaune

Schlagzeug

1. Trillerpfeife



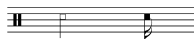
2. Guero (an Ständer)



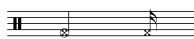
3. Woodblock (an Ständer)



4. Bongo I & II



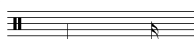
5. Kleine Trommel



6. Tom-Tom (Bass)



7. Großes Becken (aufgehängt)



Trommelstöcke

Klavier

Viola

Kontrabass

Die Uraufführung am 28. März 2009 in Köln (*Ensemble Europa* Konzert des WDR) spielte das *Ensemble Aventure Freiburg* mit Martina Roth (Flöte), Walter Ifrim (Klarinette), Wolfgang Rüdiger (Fagott), Kathrin Duschmalé (Horn), Andrew Digby (Posaune), Nicholas Reed (Schlagzeug), Akiko Okabe-Dierstein (Klavier) Friedemann Treiber (Viola) und Johannes Nied (Kontrabass), Bernhard Wulff (Dirigent)

Spieldauer ca. 11 Minuten

E MR □ 42 © Copyright 2013 by Michael Reudenbach

Stratton für Ensemble

2009

Partitur in C
Dauer ca. 11'

Michael Reudenbach

$\text{♩} = 67$

The score is for a chamber ensemble. It consists of the following parts:

- Flöte (Flute)
- Klarinette (B) (Clarinet B)
- Fagott (Bassoon)
- Horn (F) (French Horn)
- Posaune (Trumpet)
- Trillerpfeife (Piccolo)
- Guero (Cymbal)
- Woodblock
- Bongo I & II
- Kleine Trommel (Snare Drum)
- Tom-Tom (Bass)
- Großes Becken (Tom-Tom)
- Klavier (Piano)
- Viola
- Kontrabass (Cello)

The score is in 2/4 time and consists of 67 measures. The key signature is C major. The tempo is marked $\text{♩} = 67$. The dynamics are marked *fff* (fortissimo) throughout. The score includes various musical notations such as rests, notes, and articulation marks like *sputare* and *15^{ma}*. The percussion part includes a complex rhythmic pattern with various drum sounds.

Fl. *3*

Kl. *3*

Fg. *3*

Hrn. *3*

Pos. *3*

20

Perc. *3*

Kl. *15ma*

Vla. *3*

Kb. *3*

Fl. *5*

Kl. *5*

Fg. *5*

Hrn. *5*

Pos. *5*

27

Perc. *5*

Kl. *15ma*

Vla. *5*

Kb. *5*

Fl. *ff*

Kl. *ff*

Fg. *ff*

Hrn. *ff*

Pos. *ff*

109

Perc. *f* *ff* *f* *ff* *ff*

Kl. *ff*

Vla. *ff* arco

Kb. *ff* arco

Fl. *sfz* *pp* *ff*

Kl. *f* *ff*

Fg. *f* *ff*

Hrn. *f* *ff*

Pos. *f* *pp* *ff*

[f#0] [f#0] simile

115

Perc. *f* *ff*

Kl. *sfz* *ff*

Vla. *f* *ff*

Kb. *sfz* *ppp*

l. v.

Fl. *ppp*

Kl. *f*

Fg. *mf*

Hrn. *pp*

Pos. *ff*

171

Perc. *f ff f f ff f f*

Kl. *f fff ff*

Vla. *ppp ppp*

Kb. *pp ff ppp*

Fl. *pp*

Kl. *p*

Fg.

Hrn. *pppp ppp*

Pos. *p f ppp*

182

Perc. *ff f f ff f*

Kl. *ppp*

Vla. *f*

Kb. *p mp*